



IO-Power Outdoor Wireless WiFi MIMO AP

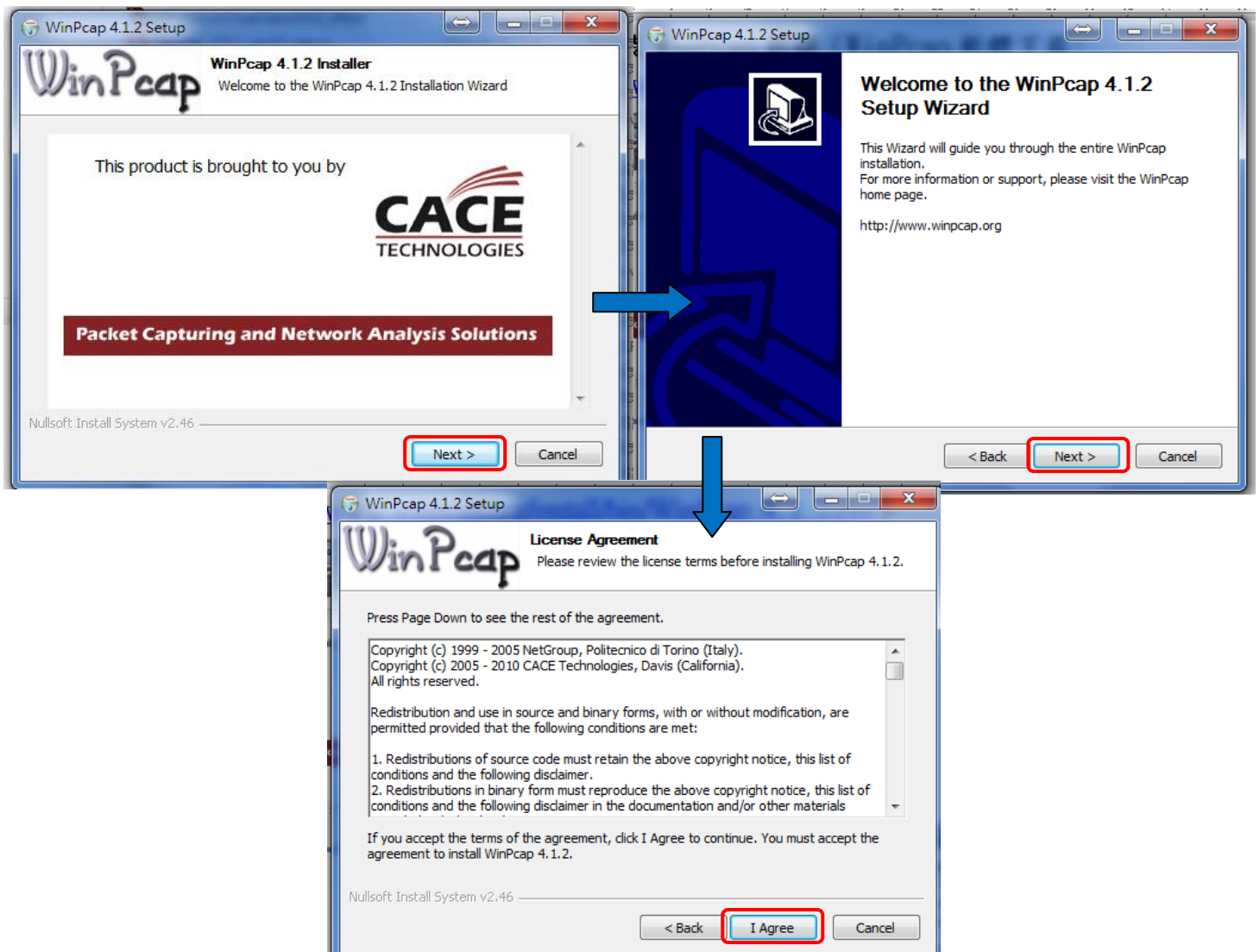
APM-101R(H) / APM-102R(H) / APM-103R(H)

Wireless Management Brochure V1



1. Install WinPcap software (WinPcap for Windows7:

http://www.io-power.com.cn/io-power%20web%20ftp/WinPcap_4_1_2.exe)





2. Download and run L2discover_x86_r8 (antivirus program off if necessary)

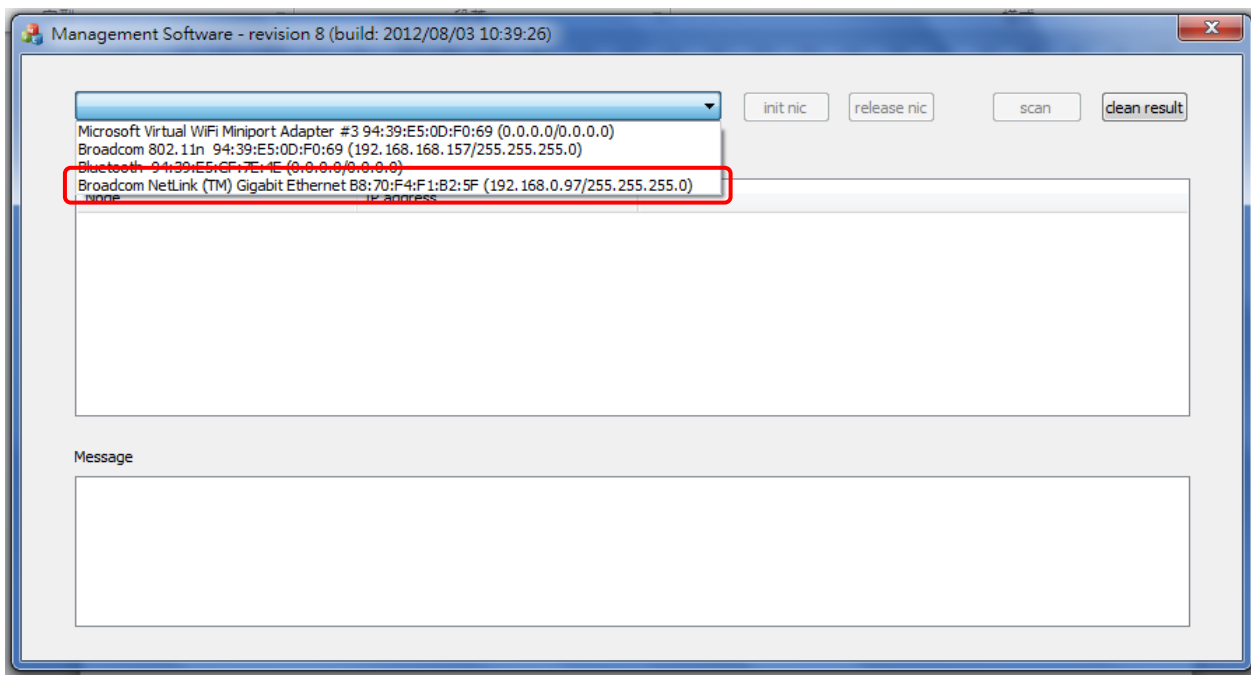
Download L2discover_x86_r8 :

http://www.io-power.com.cn/io-power%20web%20ftp/L2discover_x86_r8.exe

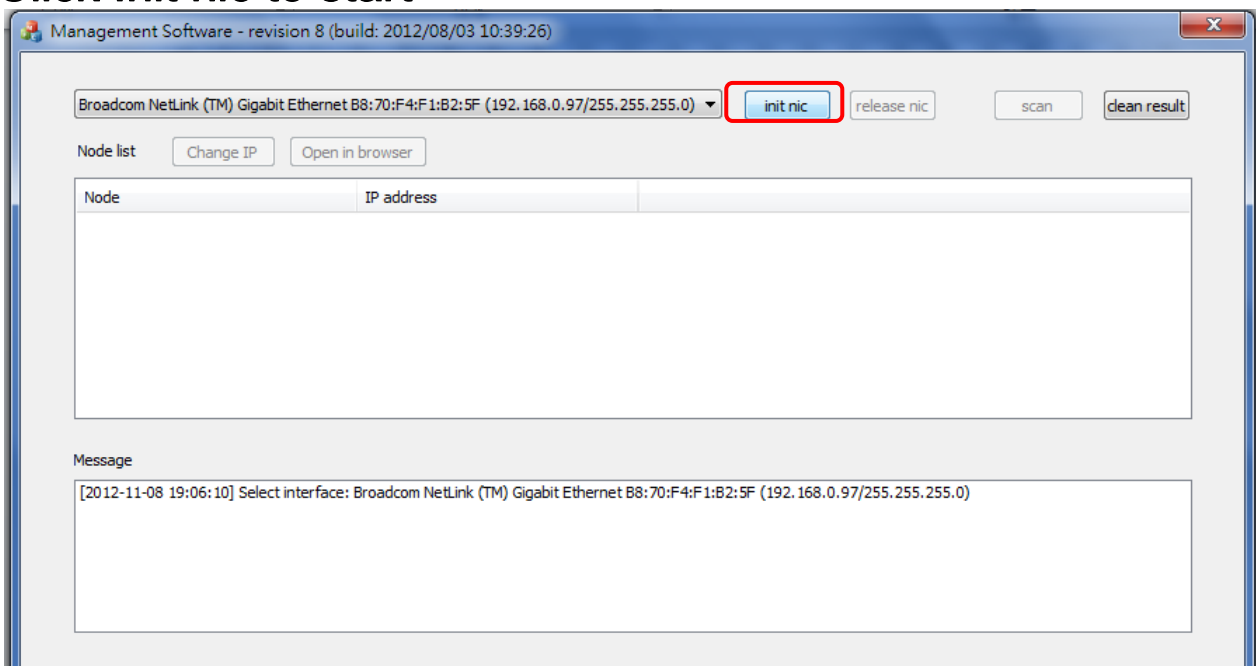
Click the picture to initiate the program



3. Select the interface to wireless system (either wireless or wire)

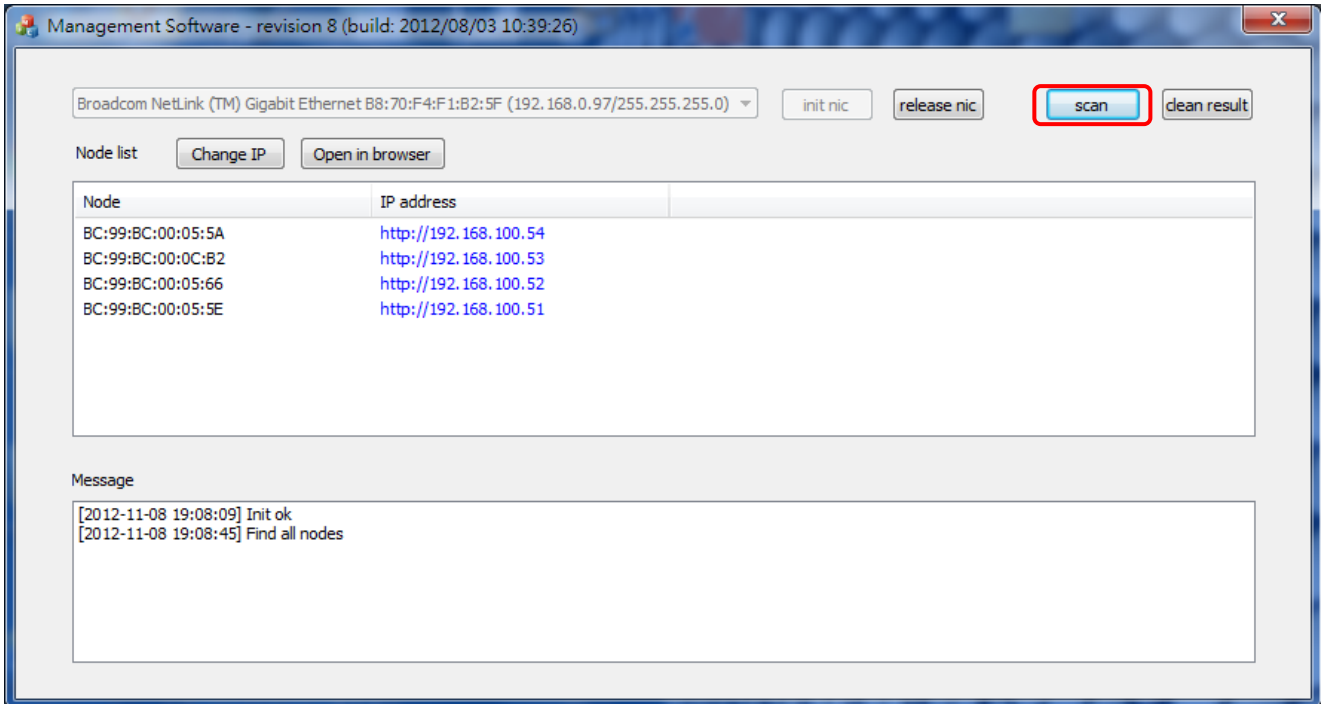


4. Click Init nic to start





5. Click Scan to scan all the APs (Node)



Note: After scanning, if a certain AP is not on the list, then it is unusual.

6. Select the MAC or IP of the AP that you are about to operate, then click 『Open in browser』 to open the operation webpage or click 『Change IP』 to change its IP

